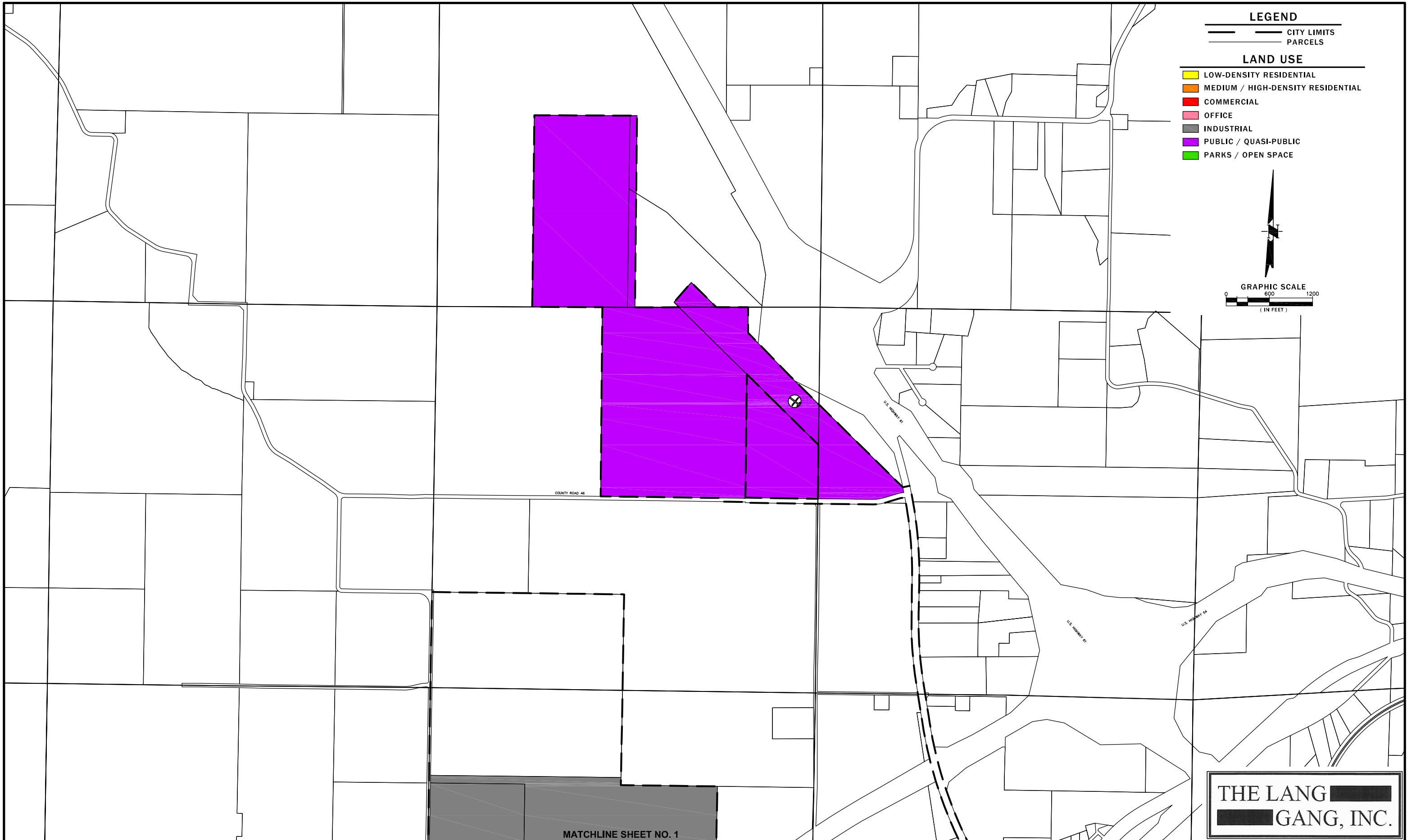


I:\100\102\217 Bowling Green Comp plan (Lang Gang)\102217 LAND USE.dwg, 10/7/2011 2:11:42 PM, rhayes, 1:1

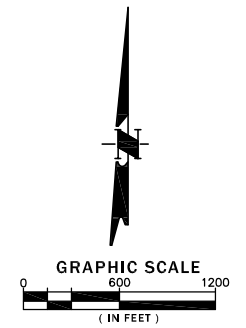


LEGEND

— CITY LIMITS
— PARCELS

LAND USE

- LOW-DENSITY RESIDENTIAL
- MEDIUM / HIGH-DENSITY RESIDENTIAL
- COMMERCIAL
- OFFICE
- INDUSTRIAL
- PUBLIC / QUASI-PUBLIC
- PARKS / OPEN SPACE



MATCHLINE SHEET NO. 1

THE LANG GANG, INC.

NO.	DATE	REVISION DESCRIPTION	BY

MECO ENGINEERING COMPANY, INC.
 ENGINEERS • SURVEYORS
 3120 HIGHWAY W
 HANNIBAL, MISSOURI 63401
 (573) 221-4048

THE PROFESSIONAL WHOSE SIGNATURE AND PERSONAL SEAL APPEARS ON THIS SHEET ASSUMES RESPONSIBILITY ONLY FOR WHAT APPEARS ON THIS PAGE, AND DISCLAIMS (PURSUANT TO SECTION 327.411 RSMO) ANY RESPONSIBILITY FOR ALL OTHER PLANS, SPECIFICATIONS, ESTIMATES, REPORTS, OR OTHER DOCUMENTS OR INSTRUMENTS NOT SEALED BY THE UNDERSIGNED PROFESSIONAL RELATING TO OR INTENDED TO BE USED FOR ANY PART, OR PARTS OF THE PROJECT TO WHICH THIS PAGE REFERS.

**CITY OF BOWLING GREEN
 ENVISION 2020 COMPREHENSIVE PLAN**

SURVEYED	DESIGNED	DRAWN	CHECKED	APPROVED	RELEASED
	K. POCIASK	R. HAYES J. STEWART			

**EXISTING LAND USE
 AUGUST 2011**

SCALE	DRAWING NAME	PROJECT NUMBER	SHEET NO.
1" = 1200'	102217 LAND USE	102-217	2