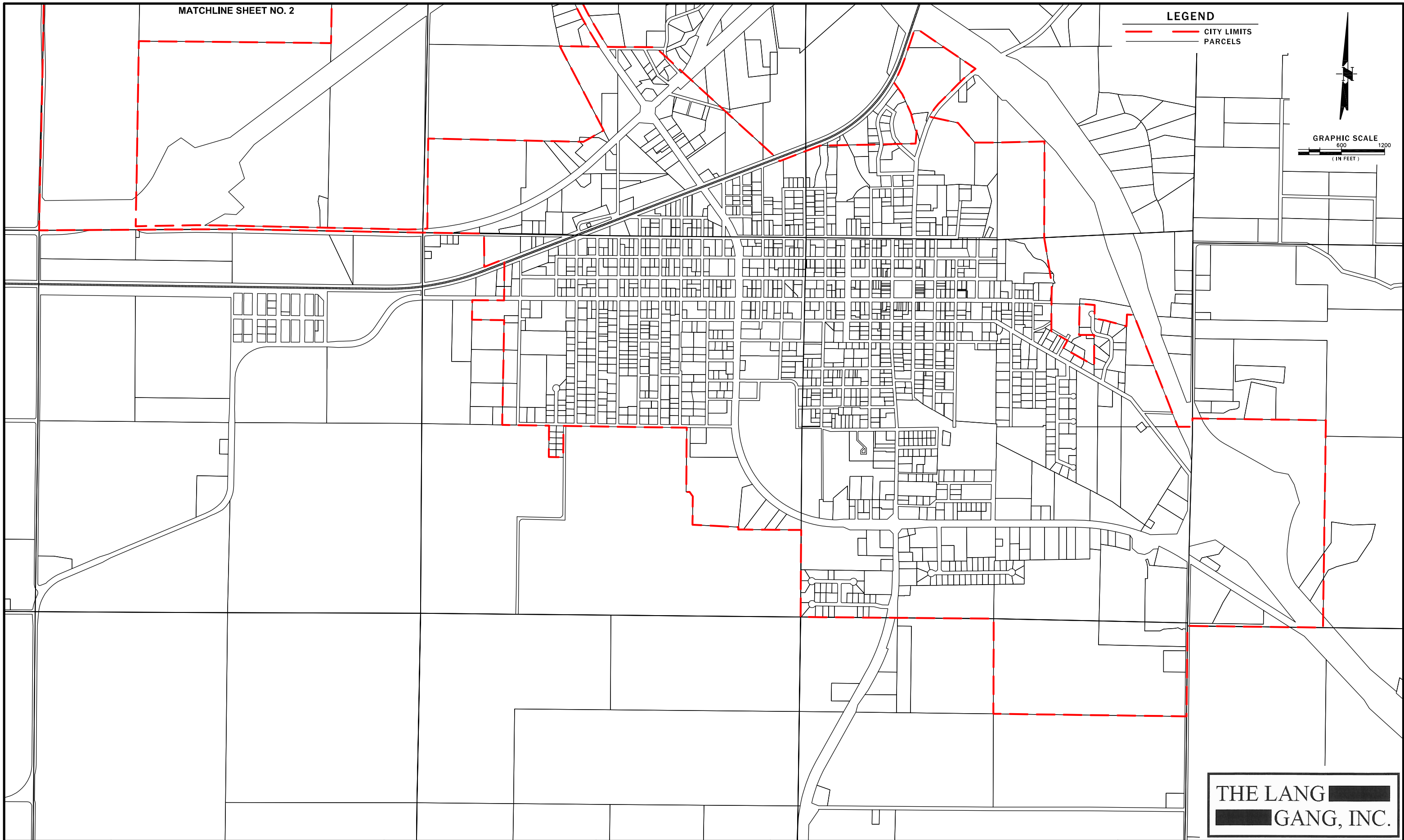
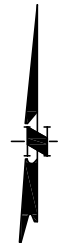


MATCHLINE SHEET NO. 2

LEGEND

— CITY LIMITS
- - - PARCELS

GRAPHIC SCALE
600 1200
(1 IN FEET)



THE LANG [REDACTED]
[REDACTED] GANG, INC.

NO.	DATE	REVISION DESCRIPTION	BY

MECO ENGINEERING COMPANY, INC.
 ENGINEERS • SURVEYORS
 3120 HIGHWAY W
 HANNIBAL, MISSOURI 63401
 (573) 221-4048

THE PROFESSIONAL WHOSE SIGNATURE AND PERSONAL SEAL APPEARS ON THIS SHEET ASSUMES RESPONSIBILITY ONLY FOR WHAT APPEARS ON THIS PAGE, AND DISCLAIMS (PURSUANT TO SECTION 327.411 RSMO) ANY RESPONSIBILITY FOR ALL OTHER PLANS, SPECIFICATIONS, ESTIMATES, REPORTS, OR OTHER DOCUMENTS OR INSTRUMENTS NOT SEALED BY THE UNDERSIGNED PROFESSIONAL RELATING TO OR INTENDED TO BE USED FOR ANY PART, OR PARTS OF THE PROJECT TO WHICH THIS PAGE REFERS.

**CITY OF BOWLING GREEN
 PIKE COUNTY, MISSOURI**

SURVEYED	DESIGNED	DRAWN	CHECKED	APPROVED	RELEASED
	K. POCIASK	R. HAYES J. STEWART			

**EXISTING CITY BASE MAP
 AUGUST 2011**

SCALE	DRAWING NAME	PROJECT NUMBER	SHEET NO.
1" = 1200'	102217 CITY MAP	102-217	1

IF THIS DRAWING IS PLOTTED MORE THAN 11x17 IN SIZE, IT IS AN ENLARGED PLOT - SCALE SHOULD BE ADJUSTED ACCORDINGLY